

## About Toshiba Tec

Toshiba Tec Germany Imaging Systems GmbH is part of the globally operating Toshiba Tec Corporation, active in various high-tech industrial sectors.

Toshiba Tec Corporation is a leading provider of information technology, operating across multiple industries - ranging from retail, education and business services to hospitality and manufacturing. With headquarters in Japan and over 80 subsidiaries worldwide, Toshiba Tec Corporation helps organisations transform the way they create, record, share, manage, and display information.

For more information please contact us:

### Toshiba Tec Germany Imaging Systems GmbH

Carl-Schurz-Str. 7  
41460 Neuss  
Germany

### Telephone

+49 2131-1245-0

### Fax

+49 2131-1245-402

### Website

[www.toshiba-europe.com/tec](http://www.toshiba-europe.com/tec)



**Together Information is Toshiba's vision for how people and organisations create, record, share, manage and display ideas and data.**

**It is based on our belief that the most successful organisations are those that communicate information in the most efficient way.**

**We make that possible through an integrated portfolio of industry specific solutions, all of which reflect Toshiba's commitment to the future of the planet.**

**For more information please visit:  
[www.togetherinformation.com](http://www.togetherinformation.com)**

**e-BRIDGE Fleet Management System**

## Product brochure

- > Managing a fleet of multifunctional systems across different locations can be challenging. Now you can centralise and optimise the administration of your networked devices with the Toshiba e-BRIDGE Fleet Management System.
- > The Toshiba e-BRIDGE Fleet Management System (EFMS) is a unique, dedicated, and reliable network management tool for MFPs, printers, and barcode printers. It allows you to measure almost everything regarding the device and use of consumables.
- > A trademark of Toshiba's leading technology is the easy and intuitive use of its products. EFMS is no exception - the software can easily be integrated into existing networks and ensures regular and accurate reporting.



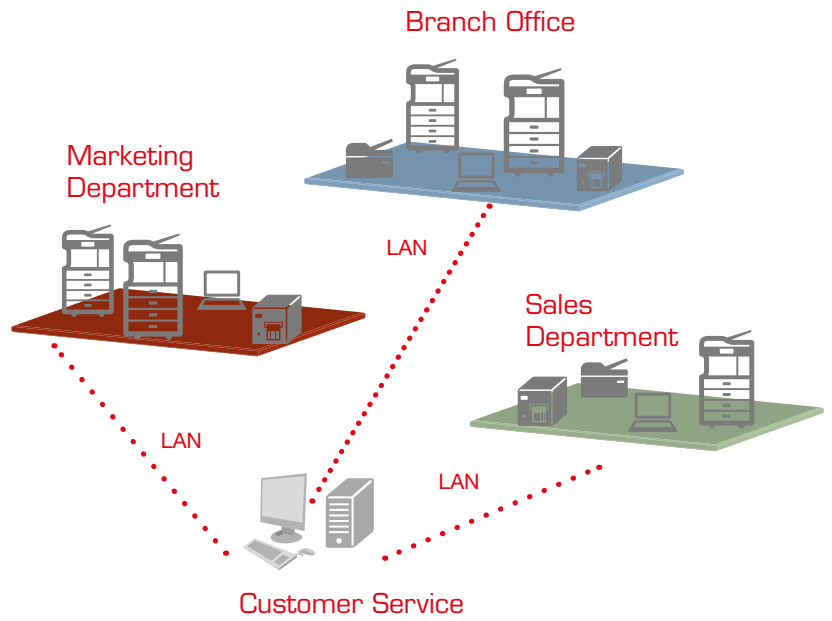
# SMART REPORTING

From across your network, EFMS continuously collects usage counts from every compatible MFP or printer<sup>1</sup>. Each device's function usage such as monochrome and colour print, scan, and fax is collected and available for report generation.

Scheduled, automated reporting gives you clear overview of the MFPs usage and you can easily allocate consumable quantities and cost. IT administrators, operators and managers will value the reduced management time per device and the cost transparency. And thanks to individual and group counter readings you can fully automate your MFP billing process and eliminate manual work.

Once EFMS has been installed on your server you can search for all compatible printing systems within your network. By scheduling regular scans, EFMS will show you if new devices are available, which can then easily be added.

Systems can be grouped according to organisational structures such as location, department or cost centre. Sub-grouping up to ten levels allows for detailed granulation of devices, but remains easily navigable through a simple tree-view directory structure.



## Key benefits

- > Efficiently operating MFPs and printers lets you get more done in less time, reduce paper surplus, and thus, save money.
- > Centralised administration and monitoring lowers management time per device for IT departments.
- > Users will benefit from improved MFP availability, especially in the midst of time-sensitive tasks.
- > Automated notifications to service staff provide all the information needed in order to prevent downtime.
- > Monitoring and usage reporting will help operate more productively and maximise the equipment efficiency. User-based reporting provides the transparency necessary to allocate costs correctly.

The intuitive EFMS client interface allows easy monitoring and modifications of settings via a web browser. Access to this client interface can be granted based on LDAP or local user authentication.

The entire data collected by EFMS is stored in an SQL database. Scheduled database backups ensure that the data can be recovered easily.

EFMS reports can be presented as tables, bar graphs or pie charts, and saved as PDF files. Alternatively, the raw data can be exported in CSV format for processing with Crystal Reports, Excel or other report generation software.

Templates automatically group the data by department, location, cost centre or other defined variables. You will not waste any more time forwarding reports via E-Mail – with EFMS the right reports are sent directly to the right people at exactly the right time.

# KEY FEATURES

## Grouping

Flexible, parallel grouping enables the replication of logical or organisational structures. Sub-grouping up to ten levels is possible and can easily be navigated through.

## Monitoring

EFMS allows detailed monitoring of the fleet and its use status. Colour coding of device icons reflects the actual status and enables easy identification of the devices that need attention. This is supported by a two-tiered alert mechanism via E-Mail and pop-up.

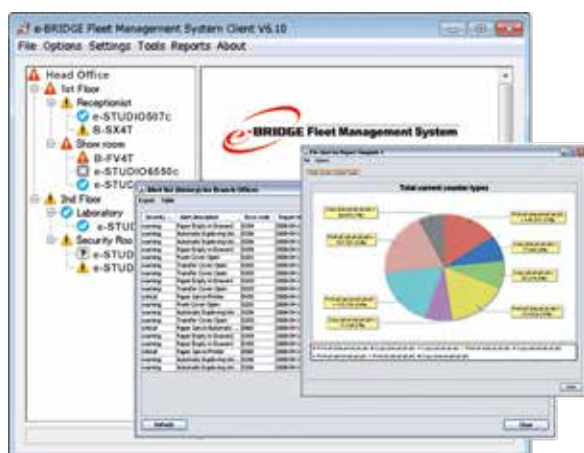
## Administration

Remote firmware updates are just as possible as is the centralised roll-out of device settings, to be applied to all compliant Toshiba systems at once. These tasks can also be scheduled in such a way, that the downtime of the systems does not fall into the regular office hours.

Cloning device settings via EFMS helps save considerable time and ensures identical set-up of multiple systems. Scheduled quota resets allow precise cost control and hassle-free user administration.

## Reporting

EFMS offers various customisable reporting templates and export functionalities which help to simplify reporting. The reports can either be automatically sent to an E-Mail address or stored on a file server. Automated billing processes can be supported through regular, scheduled device metre readings.



Easy navigation in a tree-view (e.g. by model or location)

# SYSTEM REQUIREMENTS

## Server and Client

Java Runtime Version 1.7 is required and will be automatically installed during set-up if it is not detected.

<b>Supported Operating Systems</b>	Windows 8.1/8/7 SP1/Vista SP2 (32/64 bit), Windows Server 2012 R2 (32/64 bit), Windows Server 2008 R2 (64 bit), Windows Server 2008 (32/64 bit), Windows Server 2003 R2 (64 bit), Windows Server 2003 (32 bit)
------------------------------------	--

## Recommended Server Hardware

<b>CPU</b>	Quad Core 2.0 GHz (or better)
<b>Memory</b>	Minimum 4 GB (6 GB or more recommended)
<b>HDD</b>	Minimum 200 GB

## Client Hardware

<b>CPU</b>	Minimum Intel Pentium III 800 MHz (or equivalent) Dual Core is recommended
<b>Memory</b>	Minimum 512 MB (1GB or more recommended)
<b>HDD</b>	Minimum 30 MB available space

<sup>1)</sup>For a complete list of compatible MFP, printers, and barcode printers, please contact your local Toshiba partner.